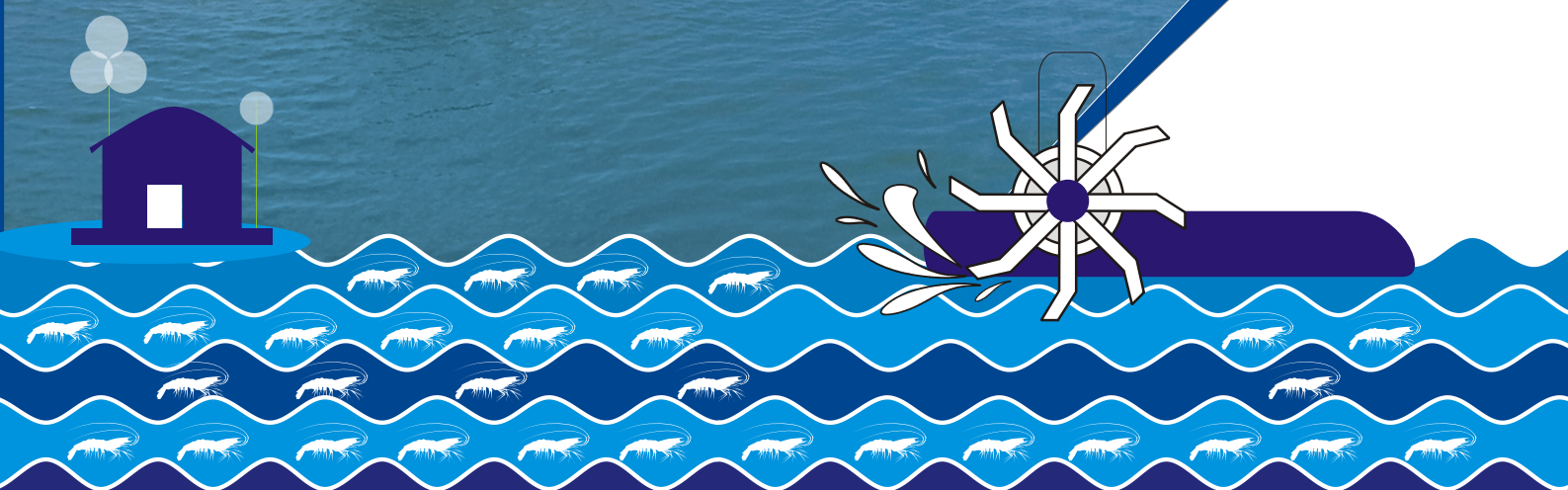


Splendid
★ 25 Years
1999

FARMING WITH
PROFITS

Promoting Safe Sustainable Zero-Residue Farming



www.salemmicrobes.com



SALEM MICROBES PRIVATE LIMITED

Regd. Off : No. 21/10C, Bajanai Madam Street, Gugai, Salem - 636 006. Tamilnadu. India.

Customer Care : 91 70106 96630 E-Mail : contact@salemmicrobes.com

www.salemmicrobes.com

93448 37525

An ISO 9001 : 2015 Company

TUVINDIA



DO NOT USE ANTIBIOTICS

USE ONLY PROBIOTICS

**AQUACULTURE PROBIOTIC
DURING SEEDSTOCKING & CULTURE
SUPER CONCENTRATED-READY TO USE**

SEED SAFE

SEEDSAFE is an instantly soluble, super-concentrated probiotic blend for use in Aquaculture. The selected strains of **SEEDSAFE** has high liveability, adapts faster to a wide range of salinities and acts instantaneously as activation by brewing is NOT required. **SEEDSAFE** is recommended for use in Pond preparation, During Stocking and Culture period to defend various stages of Pathogenic invasions.

CONTENTS:

Bacillus subtilis *Bacillus licheniformis*
Bacillus sulfidophilus *Bacillus amyloliquefaciens*

COUNT :

A minimum of
 5×10^{12} CFU/kg
On an excipient base

- ◆ Seeds Water with beneficial Bacteria
- ◆ Increases Survival of seeds
- ◆ Removes Bacterial Bioluminescence by *Vibrio spp.*
- ◆ Degrades Waste and Removes slime
- ◆ Improves Gut health and Disease resistance
- ◆ Provides faster start-ups
- ◆ Ensures Better Water Quality



DOSE: Before and after stocking :
1 -2 kg / Acre
During Culture: 500 g / Acre



HYDROGEN SULPHIDE DESTROYER

ACTIV SOIL

ACTIV SOIL is a blend of selected strains of microorganisms to overcome the problems faced by evolution of Hydrogen Sulphide gas from pond bottom, Black soil formation, Foul odor (Rotten Egg Smell) on Water and shrimps and excess blooming. **ACTIV SOIL** with its Anaerobic and Aerobic combination oxidizes Hydrogen Sulphide and utilizes Nitrate to combat their negative effects. This effectively controls and also reduces Over blooming. The Rotten Egg smell developed from the black soil slowly gets eliminated and restores the Pond Water Quality to the desirable level. **ACTIV SOIL** stops Shrimp mortality and progressively increases feed intake to the expected quantity.

CONTENTS :

Bacillus subtilis *Bacillus amyloliquefaciens*
Bacillus sulfidophilus *Bacillus thuringiensis*
Thiobacillus denitrificans *Pseudomonas putida*
Enterobacter cloacae

COUNT :

5×10^{12} CFU/kg
On an excipient base

- ◆ Mitigates H₂S Toxicity
- ◆ Reduces toxic sludge buildup
- ◆ Depollutes and cleans pond bottom
- ◆ Prevents Blacksoil formation
- ◆ Stabilises pH
- ◆ Improves overall Water Quality



DOSE : Regular Preventive dose :
1 kg /Acre
Black soil condition :
2-3 kg /Acre by mixing with
sand and applying in the area
of black soil formation



BLACK SOIL BEFORE TREATMENT



BLACK SOIL AFTER TREATMENT

Probiotic for
**POND WATER MANAGEMENT &
DISEASE PREVENTION**

MicroCheck

MICROCHECK is a consortium of naturally occurring favourable bacteria of the pond, selected for their superior probiotic and bio-degrading features. These strains are equally capable of working under diverse osmolarity and temperatures. **MICROCHECK** is recommended to combat the ill effects of the opportunistic pathogens when the natural defense mechanisms of the cultured shrimps are suppressed.

CONTENTS:

Bacillus subtilis *Bacillus licheniformis*
Bacillus laterosporus *Bacillus amyloliquefaciens*
Bacillus megaterium

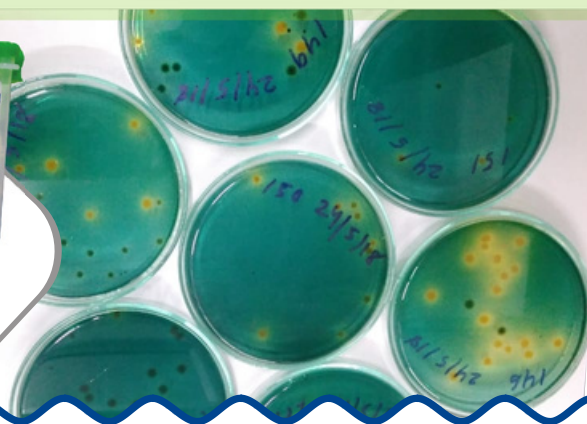
COUNT :

A minimum of 2×10^{13} CFU /kg
On an excipient base

- ◆ Introduces healthy probiotic bacteria to improve survival on stocking
- ◆ Prevents bacterial bioluminescence and vibrio infections
- ◆ Breakdowns organic matter and keep water clean
- ◆ Promotes probiotic bacterial flocs and Natural immunity



DOSE:
Pond Preparation:
2 kg / Acre
During Culture:
1 kg / Acre



AQUACULTURE MINERAL MIXTURE with TRACE MINERALS

BOOSTUP

BOOSTUP is New generation mineral mixture for use in high density culture and advanced stages of Semi-intensive culture. When the Shrimp Biomass in the pond is high, the requirement for minerals for Growth and moulting increases. Also, the Trace mineral requirements for Bloom stabilization increases. To meet these demands, **BOOSTUP** is used in addition to other regular minerals.

CONTENTS: Macro minerals and Trace minerals.

- ◆ Proper Phytoplankton and Zooplankton development
- ◆ Establishes good algal bloom
- ◆ Ensures even growth of shrimp and Shrimp body colour.
- ◆ Ensures Good Shell Quality
- ◆ Prevents problem of Loose shell, Soft shell, Body cramp, Bend animals and Delayed molting.
- ◆ Balanced Mineral Supply
- ◆ Proper muscle development
- ◆ Optimum Weight gain
- ◆ Builds Immunity



DOSE:
During Culture: 5 - 10 kg / Acre,
Every week.
During Looseshell / Soft shell /
Body Cramp and Bend condition:
15-20 kg / Acre, for every 3 days,
until problem starts receding.
Feed Supplement: 10 - 20
gram / kg feed, once
daily.



AMMONIA CONTROL

YUCCA TREAT 30

YUCCA TREAT 30 is the spray dried extract of the Mohave Yucca plant, *Yucca schidigera*. Concentrated to 30 percent yucca actives, **YUCCA TREAT 30** is a high quality, easily blended powder. When Used in Shrimp, **YUCCA TREAT 30** has been shown to decrease the overall levels of ammonia by inhibiting Urease Enzyme and binding the free ammonia present in the pond environment.

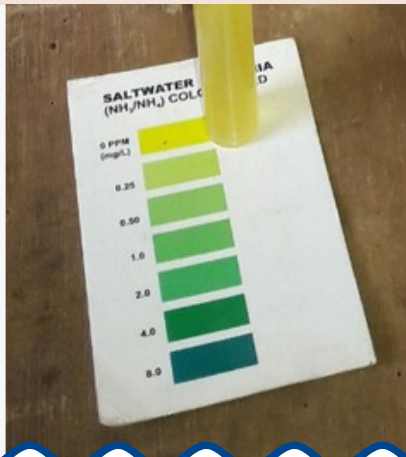
CONTENTS: Yucca Extract, Methane Carboxylic acid and plant root extract

- ◆ Immediately binds the preformed Ammonia
- ◆ Prevents further production of ammonia
- ◆ Neutralizes off flavor of ammonia and reduces the stress in shrimps
- ◆ Suitable for emergency treatment



DOSE:

500 -1000 g / acre by mixing with sand and sprinkling over the pond. Application can be repeated once in 15 days up to 90 days of culture and once in 10 days after 90 days of culture.



MULTI VITAMINS - MINERALS **AMINO ACIDS**
PHYTO NUTRIENTS **POWERFUL FEED ATTRACTANT**

Grow One

Grow One is the latest generation All in One feed supplement for Aqua Culture. The right combination of 46 + vital ingredients as Vitamins, Minerals, Amino acids and Phytonutrients give all round support and strength for the animal throughout its life cycle to overcome stress during Growth, Moulting, Change in Water quality, Fluctuations in Temperature, Injury and Infections.

COMPOSITION : Vitamins, Minerals, Amino Acids & Phytonutrients

- ◆ 46 Vital Ingredients
- ◆ Supports Shell Development
- ◆ Strengthens to overcome stress
- ◆ Increases feed intake
- ◆ New Attractant Flavor
- ◆ Ensures regular molting



DOSE :

20 ml / kg of feed,
Shade dry and
Broadcast.

Ammonia and Nitrite Control for Aquaculture

Nitro-Nil

NITRITE REDUCER

Nitro-Nil Nitrite Reducer is a liquid blend of Probiotic bacteria to combat the ill effects of ammonia and nitrite affecting the Aquaculture systems.

CONTENTS: *Bacillus sp.* *Nitrobacter sp.* *Nitrosomonas sp.*

COUNT: A minimum of 3×10^{12} CFU / L On an excipient base

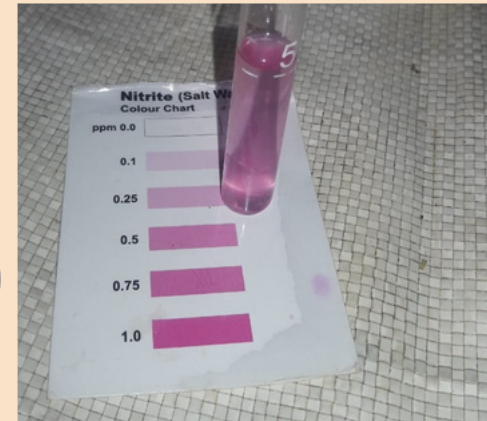
- ◆ Removes Ammonia and Nitrite from the Pond
- ◆ Relieves the shrimps from ammonia stress
- ◆ Prevents further formation of ammonia
- ◆ Neutralizes the off-flavor, mal-odour and creates friendly environment
- ◆ Increases the feed intake by decreasing the nitrite toxicity
- ◆ Works both in Water column and Soil bottom



DOSE:

For Maintaining Optimum Ammonia & Nitrite levels : 1 Ltr. / Acre of pond area of 1-meter depth, every 5 day.

During High Level of Ammonia & Nitrite : 2 - 3 Ltr. / Acre, every alternate day until problem reduces to manageable levels.



PROBIOTIC FEED SUPPLEMENT
NON-ANTIBIOTIC GROWTH PROMOTER

Gut Line

GUT LINE is a Cocktail of selected strains of microbes isolated from the Gut of healthy stock of Shrimp. **GUT LINE** when given as a feed supplement enter the shrimp with the feed, coats the intestine and act as a protective barrier against pathogens.

GUT LINE in the feed acts as a shield against bacterial infections throughout the culture, colonizes the digestive tract of the shrimp and the pond water with favorable bacteria and competitively excludes pathogenic and opportunistic bacteria.

CONTENTS: • *Bacillus licheniformis* • *Bacillus pumilus*
• *Bacillus clausii* • *Bacillus leavolacticus*

COUNT: A minimum of 2.5×10^{12} CFU/kg On an excipient base

- ◆ Seeds the Gut with essential Microorganisms
- ◆ Increases the survival of PL's
- ◆ Strengthens host defense mechanism
- ◆ Maintains overall Gut health
- ◆ Protects the Gut against pathogens
- ◆ Improves digestion by enzyme secretion
- ◆ Increases feed intake



DOSE:

10 g / kg of feed, at least 2 feed schedules a day, to maintain a healthy stock.

During Periods of Stress: 20 g / kg of feed in all feed schedule continuously for 7 Days.



**Organic Feed Enhancer
NON-ANTIBIOTIC GROWTH PROMOTER**

Feed On

Feed On is a synergistic combination of Organic acids, Essential Oils, Antioxidants and Prebiotics to ensure specialised condition for Better Feed digestion, absorption and assimilation. **Feed On** contributes immensely for a pathogen free Gastrointestinal tract to ensure steady growth and development of the Shrimps.

CONTENTS: A proprietary blend of Organic acids, Essential oils, Antioxidants and Prebiotics On an excipients base.

- ◆ Reduces Gut pH
- ◆ Encourages growth of Probiotic microflora
- ◆ Increases Enzyme secretion
- ◆ Prevents Gut infections as white fecal diseases
- ◆ Attractive flavour to increase feed Intake
- ◆ Inhibits growth of pathogenic bacteria
- ◆ Improves fat and protein digestion



DOSE:

- **To Improve Feed Intake:**
Add 10 g of **Feed On** /kilogram of Feed. Ensure that it is added in at least 2 feed schedules a day, to maintain a healthy stock.
- **During Periods of Stress as Improper digestion :** Apply 20 g / kg of feed in all feed schedules continuously for 7 Days.



NUTRITION FOR SHRIMP

YEAST STARTER

YEAST STARTER is a live yeast blend used for nutritional enrichment in shrimp and fish culture.

CONTENT: *Saccharomyces cerevisiae*

COUNT: 3×10^{12} CFU/kg
On an excipient base

- ◆ Act as Starter for pond preparation
- ◆ Stimulates feed intake
- ◆ Increases Biofloc population
- ◆ Promotes Gut health
- ◆ Promotes Phyto and Zooplankton development



DOSE :

Pond Preparation : 1 kg **YEAST STARTER** mixed with water along with Jaggery / Molasses, kept overnight and broadcast over pond.

Feed Supplement : 1 kg **YEAST STARTER** mixed with water along with Jaggery / Molasses, kept overnight and mixed in feed.

**BROAD SPECTRUM
DISINFECTANT AND VIRUCIDE FOR
AQUACULTURE**

VIRSOL AQUA

VIRSOL AQUA is effective against microorganisms infecting shrimps and the aquaculture environment as Virus, Gram positive and Gram negative bacteria, Fungus, Protozoans etc.,

CONTENTS:

- Potassium Monopersulfate compound (Triple Salt) ...50%
- Sodium Dichloroisocyanurate.....5 %
- Sulfamic Acid.....QS
- Buffers, Surfactant, detergents, descalants.....QS

- ◆ For disinfection of Reservoir ponds
- ◆ During disease outbreak in nearby ponds
- ◆ Sanitizer for shrimps during culture
- ◆ For treatment of viral, bacterial, protozoan and fungal infections
- ◆ Disinfection of farm buildings, equipments and personal movement



DOSE:

Reservoir pond 500 g / Acre
During pond preparation - 500 g / Acre
During culture period - 250-500 g / Acre
After Harvest - 500 g / Acre



MINERAL MIXTURE FOR AQUACULTURE

SALMIN DS

Double Strong-Shrimp Speciality

SALMIN DS is a specially formulated supplement for shrimp feeds with all essential ingredients which keeps shrimp healthy and help to achieve high yields. It contains Macro and Micronutrients which are favourable to build up the disease resistance and immune response. The available form of essential nutrients in **SALMIN DS** improves digestion, absorption leading to faster growth rate and high weight gain. It optimizes FCR and maximizes productivity. **SALMIN DS** ensures development of perfect endo and exoskeletal system of Shrimps. **SALMIN DS** provides sufficient nutrients that support the development of plankton. **SALMIN DS** also provides essential amino acids which helps in protein synthesis.

CONTENTS: Minerals, Vitamins and Essential Amino Acids

- ◆ Promotes Plankton Growth in Pond
- ◆ Maintains Mineral balance in Pond Bottom and water
- ◆ Helps in Molting and formation of Exoskeleton.
- ◆ Provides all essential minerals and vitamins lost due to overflow.
- ◆ Ensures Uniform Growth
- ◆ Controls the development of Blue Green Algae and other Filamentous forms.
- ◆ Reduces the frequency of Water Exchange.

DOSE:

During Pond preparation: 20 kg/hectare

During Culture: 20 kg / hectare once in every 30 days to provide a Nutrient Balance in pond water.

